



# Transportal Products

# Our Portfolio of Solutions



## Common Data Environment

We design our software to be adaptable, scalable, and responsive to our users' needs. It grows with your projects and keeps pace with the rapidly evolving technology landscape.



The Common Data Environment (CDE) is the backbone of our software solution.

A secure, web-based interface provides a flexible, collaborative, workflow-driven platform that integrates, collects, and analyses real-time, context-aware information from anywhere. It enhances teamwork and enables greater collaboration across the project team by ensuring that everyone has reliable information.

Access can be granted to all stakeholders within this integrated, controlled, and collaborative environment, built around a central, federated repository of information to provide a trustworthy, single source of truth.

### Comms

An additional messaging system is available for other means of communication, such as RFIs, TQs, and so on.

#### Key features of Comms include:

- Unique reference and name.
- Option to define a category (sub-classification).
- Option to show DMS codes in file attachments.
- Response priority levels and days allowed.

- Distribution Groups that define the relationship between users who can send comms and those who can receive them (separate from DMS Distribution Groups).
- Administrative functions of Comms Manager, First Assigned and Close Comms.

## Document Management

The workspace to provide effective team collaboration, our Document Management System (DMS), is aligned with ISO 19650 standards. It ensures that all project documentation is secure and organised in one easily accessible location.



The Document Management System (DMS) is designed to streamline team collaboration.

Key features of the DMS module include:

- **Project Templates:** DMS configurations can be copied into new projects for consistent file organisation and quick set-up.
- **Secure Access:** The standard outputs generated throughout the project lifecycle are stored in access-controlled folders.
- **Document Storage:** The document library can store links and documents.
- **Document Management:** Documents can be checked out and in with standard notifications and undo mechanisms.
- **Change Control:** Documents are change-controlled and incremented to allow the automated generation of document indexes and activity logs.
- **Advanced Search:** Includes regular file searching and semantic content searching for most document types.
- **Distribution Groups:** Users can create and manage distribution groups to enable documents to be issued to the right people.
- **Document Issue:** Distributions, approvals, and responses are recorded in a dedicated register, and users are notified by email.

## Digital Forms

Our digital construction forms are user-friendly and customisable, allowing you to design any necessary forms and workflows.



The Forms module makes designing, managing, and using digital forms easy, enhancing efficiency and accuracy in your construction projects.

### Key features of the Forms module include:

- **Form-Builder Tool:** This central hub lets you design and manage forms for your projects. It ensures that updates to form designs are consistently applied across all projects, capturing the correct data.
- **Real-Time Access:** Project teams can access and update information in real-time once forms are published.
- **Secure Access:** Workflow and access-controlled capture of site-based activity, e.g. snags, RFIs and custom forms.
- **Pin2Map:** The user identifies an area or component that requires a site action, drops a pin on the specified location, and completes a form, which gets sent to the recipient ready for review, action, and closeout.
- **Progress Tracking:** Easily track progress and overdue items with a RAG (Red, Amber, Green) status. Forms can also be printed using fully customisable templates to meet the needs of various project stakeholders.
- **Secure Sign-Off:** Forms include secure sign-off features like wet signatures and PIN codes, ensuring that only authorised personnel can approve and proceed with tasks.
- **Multi-Platform Compatibility:** Our forms work seamlessly on the web and mobile applications.

Transportal Mobile extends your workflows to the field for tasks like snagging, site diaries, and point-of-work assessments. \*

\* Android Phone/Tablet currently supported

# Asset Management

Our Asset Management function offers comprehensive tools to manage construction items and objects.



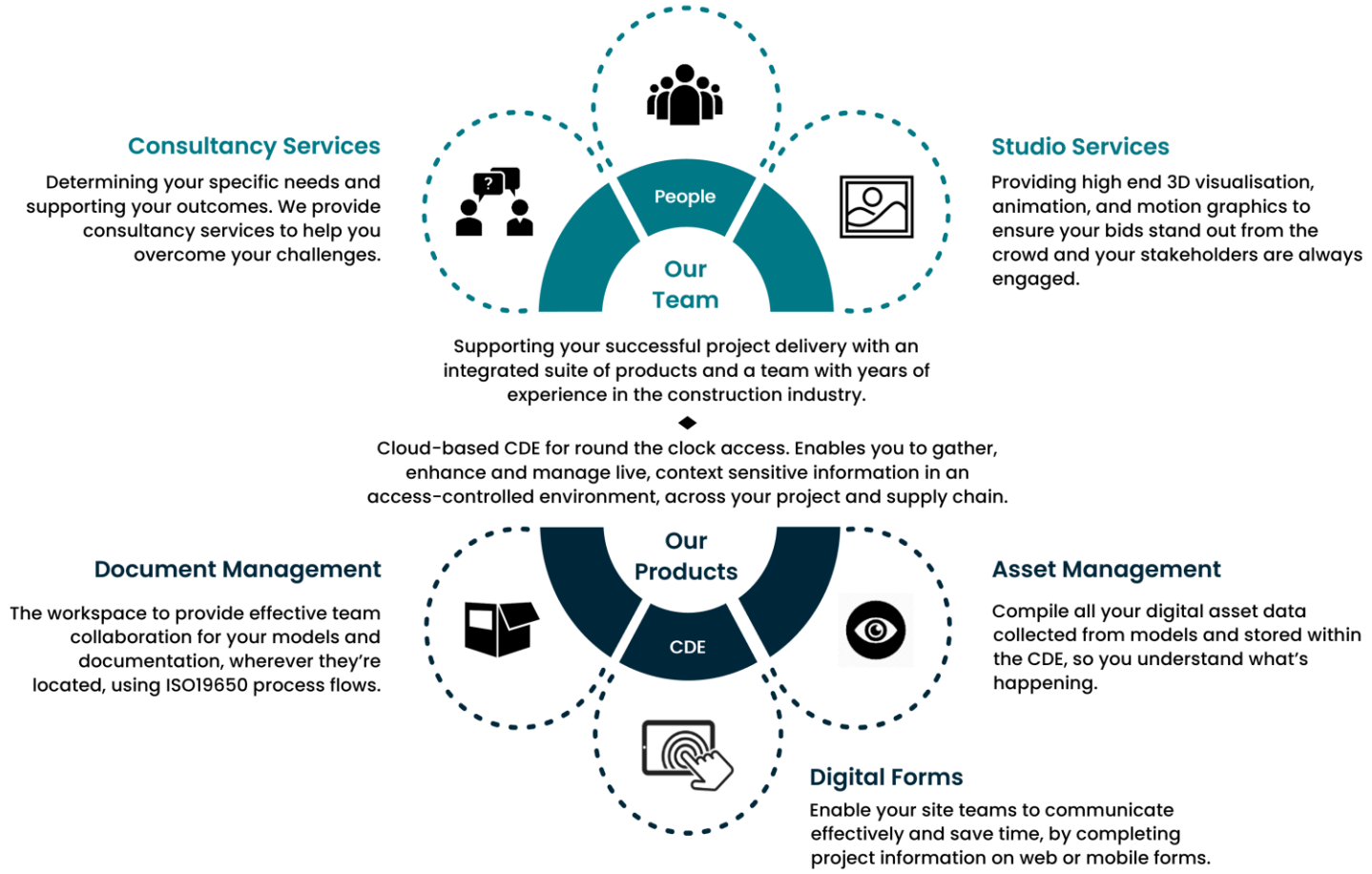
The Asset Management function makes it easier to manage, visualise and interact with digital project assets.

## Key features of Asset Management include:

- **Assets:** This module allows you to create a detailed breakdown of your project assets, automatically building from your design models. Design schedules provide a consistent view across data sets and let you add construction data within the CDE without needing the original design software.
- **Validation Checks:** Pre-defined checks help validate models and data by highlighting objects that need review.
- **Packages:** This module helps you configure individual work packages from design schedules, keeping packages and information up-to-date automatically.
- **Visualisation Engine:** 2D, 3D, and 4D review tools integrated with CDE data, ensuring synchronised data, forms, and communications.
- **Integrated CDE/IFC Viewer:** This viewer allows interaction with IFC models without needing additional installed applications.
- **O&M:** This module links operationally important documentation to individual items within the project, ensuring the correct information is available when needed and easily updated by document controllers.



# What We Do





# Technology that enables smart digital construction



Centenary House, 10 Winchester  
Road, Basingstoke RG21 8UQ



+44 (0)800 085 9872



[sales@thetransportal.com](mailto:sales@thetransportal.com)  
[www.thetransportal.com](http://www.thetransportal.com)